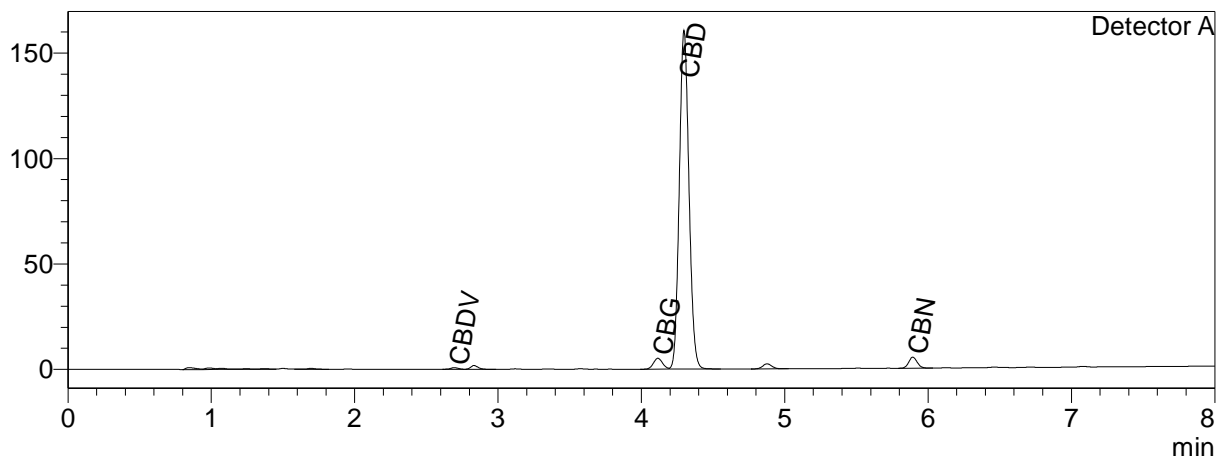


# ragané

## CERTIFICATE OF ANALYSIS

### Chromatogram

mV



### Quantitative Results

### Sample information

Detector A

Compound Name	Concentration, %
CBDV	0.079
CBDA	--
CBGA	--
CBG	0.854
CBD	30.256
THCV	--
CBN	0.427
THC	--
CBC	--
THCA-A	--
CBL	--
CBDVA	--
CBDB	--

**Sample name:** Seaberry extract + 3000mg CBD DC  
**Analysis date:** 2022 09 06

### Summary

<b>Total THC</b>	<b>0.00</b>	<b>%</b>
<b>Total THC</b>	<b>0.00</b>	<b>mg/g</b>
<b>Total CBD</b>	<b>30.26</b>	<b>%</b>
<b>Total CBD</b>	<b>302.56</b>	<b>mg/g</b>

-- — compound below detection limit or not detected; LOQ <0.01%  
THC content does not exceed legal limits.

Instrumental and analytical conditions.

Equipment: Quantitative analysis was performed using Shimadzu Cannabis Analyzer for Potency - an integrated HPLC system with built-in sample cooler, degasser, autoinjector and UV detector. NexLeaf CBX for potency, 2.7  $\mu$ m, 4.6 x 150 mm column coupled with NexLeaf CBXGuard column. Shimadzu LabSolutions software.